

LED

NEON FLEX

NMR1615





Features

- Color options: Single color, dimmable.
- Design: Superior design with exquisite craftsmanship ensure stable and reliable performance.
- Flexibility: Top bending, min. bend diameter 80mm [3.15inch]. Side bending, min. bend diameter 200mm [7.87inch]
- IP grade: Silicone extrusion, glue process end caps, IP67 protection.
- Warranty: 5 years indoor, 3 years outdoor.
- Customization: multiple spec options, can be customized upon requirements.



Optical & Electrical Parameters

Model No.	NMR1615				
CCT/Wavelength (K/nm)	2200K	2700K	3200K	3800K	5400K
Beam Angle [°]	160	160	160	160	160
Luminous Flux (lm/m)	600	630	670	650	660
CRI	90+	90+	90+	90+	90+
Efficacy (lm/W)	65	68	73	71	72
Voltage [V DC]	24	24	24	24	24
Measured Power (W/m)	9.6±10%	9.6±10%	9.6±10%	9.6±10%	9.6±10%

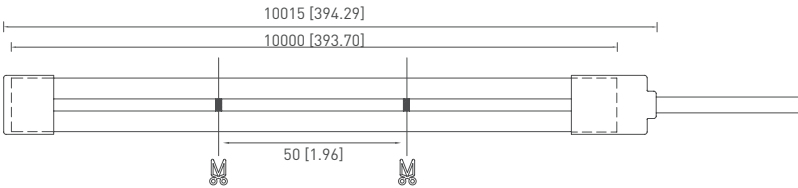
Other Parameters

Model No.	NMR1615
LED QTY (pcs/m)	120
Product Size L*W*H (mm)	10000*16.5*15.2
Standard Run Length (mm)	10000
Min. Cuttable Length (mm)	50
Working Temperature	-20~+60°C
Storage Temperature	-20~+70°C

Note:
The given data is typical values. Due to tolerances of the production process and the electrical components, values for light output and electrical power can vary up to 10%.

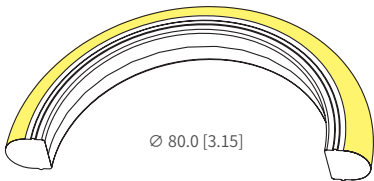
Profile Drawings

Single Feed Unit:mm [inch]

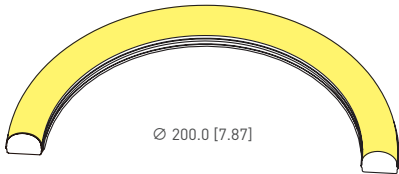


Bending Diameter Unit:mm [inch]

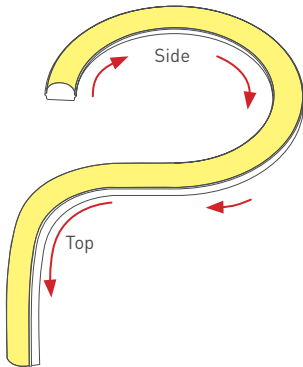
Top Bending



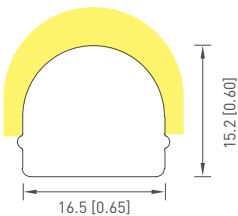
Side Bending



Bend direction

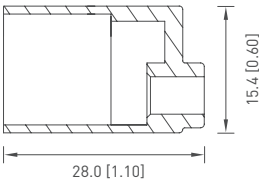


Sectional view



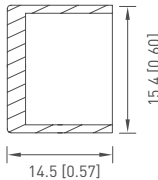
Front cap

Glue Process (IP67)



Closing End-cap

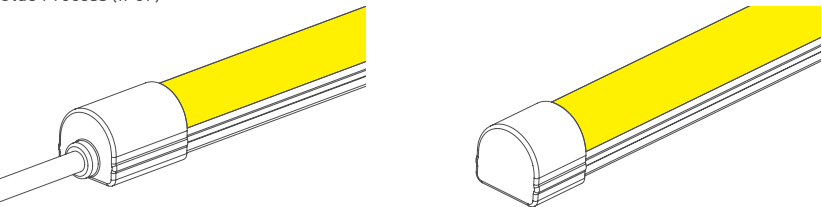
Glue Process (IP67)



Remarks: "L" is the standard size of the light strip, can be customized according to the multiple of the minimum cutting unit length.

IP Process Technology

Glue Process (IP67)



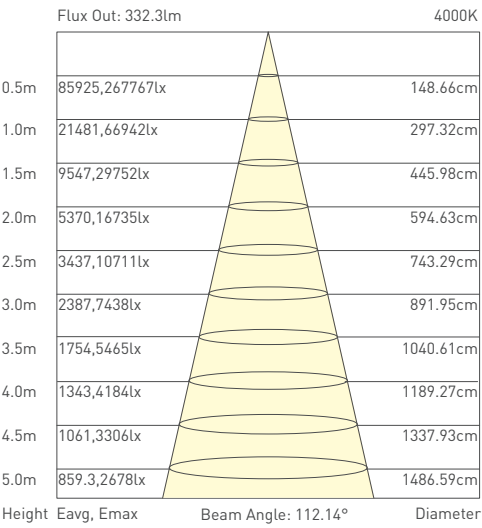
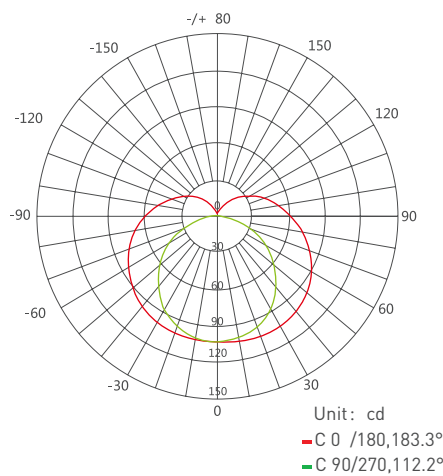
- After cutting, the IP protection of both glue processed and injection moulded product will drop to IP65, for injection moulded product, if customer self-processed injection moulded end cap for the cutted end, the IP protection will keep the IP68 level.
- Injection moulded end cap self-processing, need to prepare corresponding mold and molding equipment.
- If the customer reprocesses Blueview injection moulded end cap, and the waterproof of the molded end does not meet Blueview standard, the potential troubles are not covered by the warranty.

Product accessories

	Item	Model No.	Dimensions (L*W*H)mm	Quantity (m)/pcs	Free/Optional
	Front cap	NMR1615-PCIS	28*20.1*17.6	{10}: 6	Free
	Closing End-cap	NMR1615-ECS	14.5*20.1*17.6	{10}: 6	Free
	Front cap (Left)	NMR1615-PCLS	27*24.9*17.6	{10}: 6	Optional
	Front cap (Right)	NMR1615-PCRS	27*25.2*17.6	{10}: 6	Optional
	Front cap (Bottom)	NMR1615-PCBS	27*19.5*23.6	{10}: 6	Optional
	Aluminum Track	NMR1615-AMC	35*19.2*9.4	{10}: 30	Optional
	Aluminum Channel	NMR1615-AC	1000*19.2*9.4	{10}: 10	Optional
	Screws	--	----	NMR1615-AMC:2pcs/piece NMR1615-AC:3pcs/piece	Optional
	Silicone Glue	--	----	{10}: 1	Optional

Luminous Intensity Distribution Diagram

Average Illumination



Note: the above two figures are tested with the sample NMR1615 at CCT 4000K, for other datas, please consult sales rep.

Packaging information

Model No.	NMR1615
Product Size L*W*H (mm)	10000*16.5*15.2
Carton Size (mm)	390*390*325
Meter/Reel	10
Reel/Carton	3
Net Weight (kg)	/
Gross Weight (kg)	8.25 (1±10%)

Note: The volume weight is 9.89kg.

Recommended power supply upon working length

Model No.	NMR1615	
Working Length (m)	1	10
Rated Current (A)	0.4	4.0
Rated Voltage (DC V)	24	24
Rated Power (W)	9.6	96
Recommended Power Supply (W)	12	150
Power Supply Mode	Single Feed	

BLUEVIEW ELEC-OPTIC TECH CO.,LTD
Tel: +86-28-8148 0011 Fax: +86-28-8148 1258
Mail: sales@blueviewled.com
Web.: www.blueviewled.com
Add.: No.1000, Konggang 2nd Konggang Road, Southwest Aviation
Industrial Zone, Chengdu, China. 610207